

# AS THE DAWN BREAKS

E♭ Horn

Naoya Wada

Moderately and Sostenuto

011-3487-00

*f*

7

*mp*

15

*rit.*

*mf*

26 Legato

34 Tempo I

36

*mp*

44

© 2006 Birch Island Music Press (ASCAP), P.O. Box 680, Oskaloosa, IA 52577, USA

International copyright secured. All rights reserved. Printed in U.S.A.

WARNING! This composition is protected by copyright law. To copy or reproduce it by any method is an infringement of the copyright law.

# AS THE DAWN BREAKS

E♭ Horn

Naoya Wada

Moderately and Sostenuto

011-3487-00

*f*

7

*mp*

15

*rit.*

*mf*

26 Legato

34 Tempo I

36

*mp*

44

© 2006 Birch Island Music Press (ASCAP), P.O. Box 680, Oskaloosa, IA 52577, USA

International copyright secured. All rights reserved. Printed in U.S.A.

WARNING! This composition is protected by copyright law. To copy or reproduce it by any method is an infringement of the copyright law.

# AS THE DAWN BREAKS

Trombone TC in B $\flat$

Naoya Wada

Moderately and Sostenuto

011-3487-00

*f*

7

*mp*

15

*mp*

26 Legato

*rit.*

*mp*

34 Tempo I

*mp*

36

*mp*

44

*mp*

*mp*

# AS THE DAWN BREAKS

Trombone TC in B $\flat$

Naoya Wada

Moderately and Sostenuto

011-3487-00

*f*

7

*mp*

15

*mp*

26 Legato

*rit.*

*mp*

34 Tempo I

*mp*

36

*mp*

44

*mp*

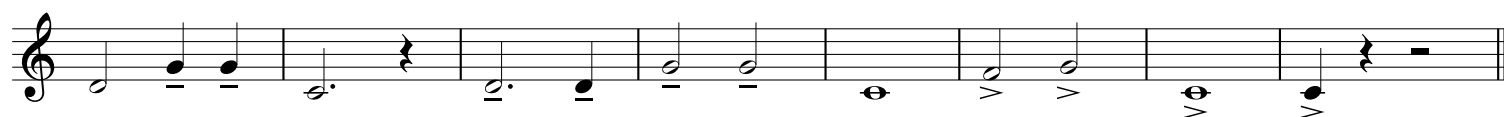
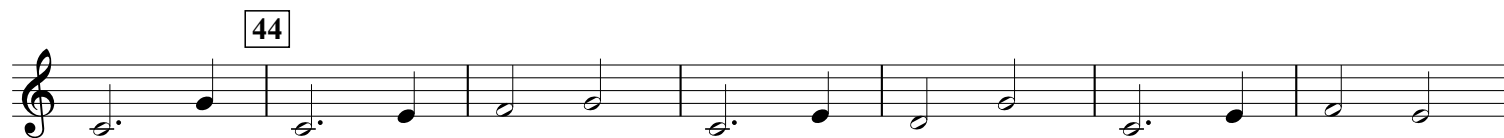
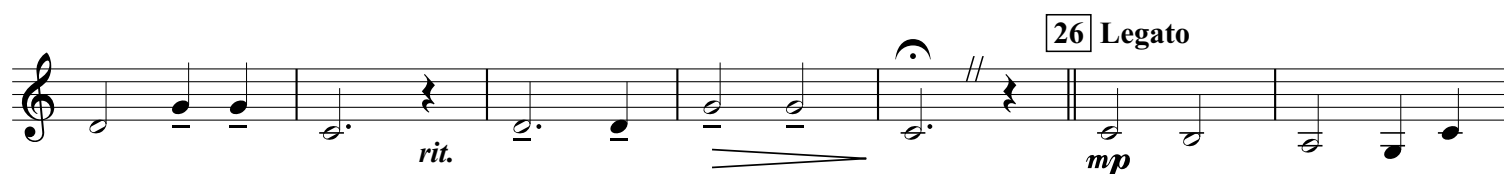
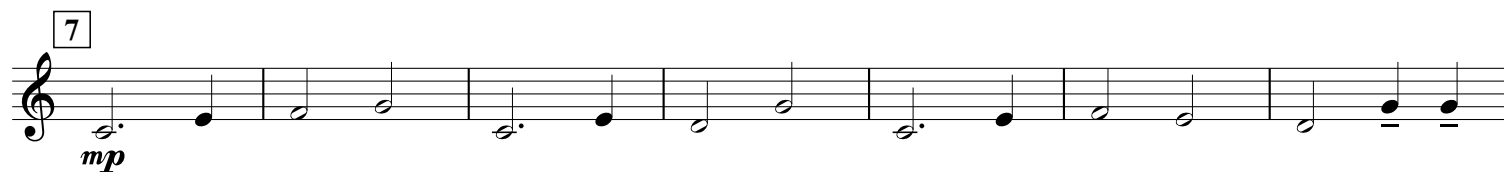
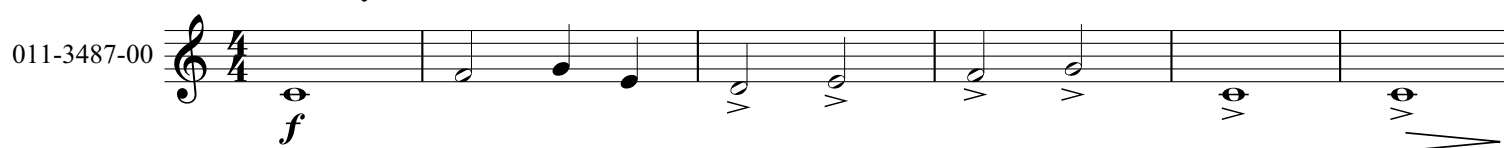
*mp*

# AS THE DAWN BREAKS

Tuba TC in E $\flat$

Naoya Wada

Moderately and Sostenuto

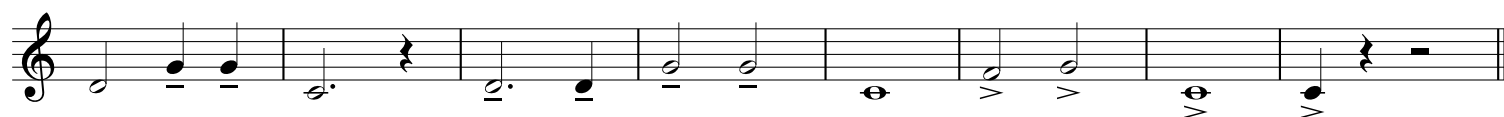
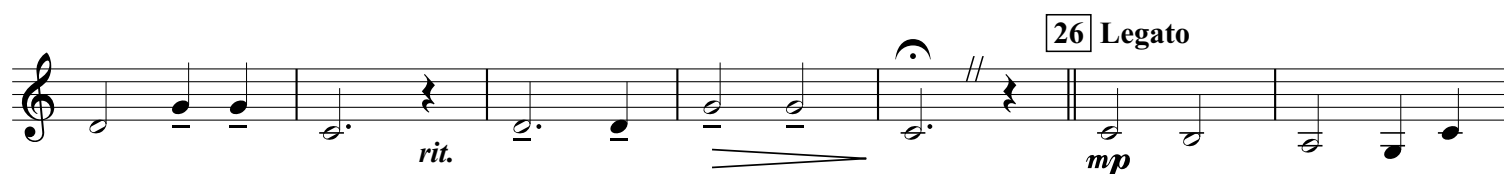
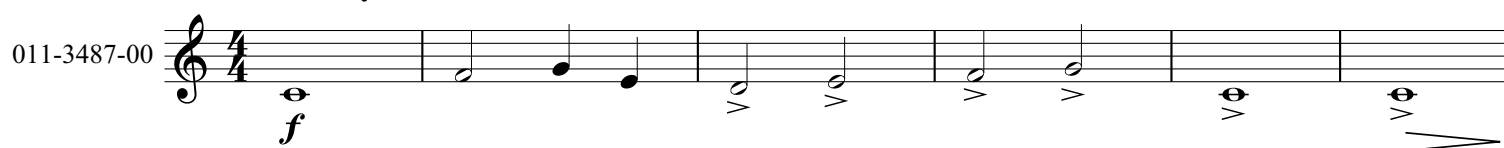


# AS THE DAWN BREAKS

Tuba TC in E $\flat$

Naoya Wada

Moderately and Sostenuto

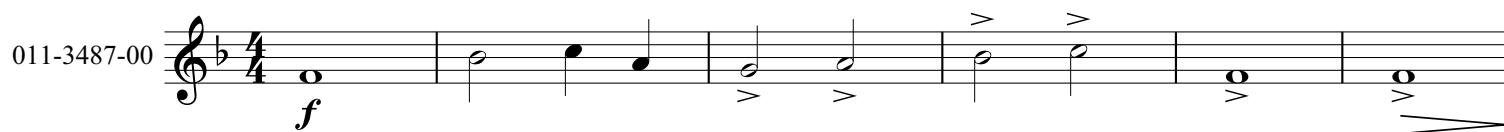


# AS THE DAWN BREAKS

Tuba TC in B $\flat$

Naoya Wada

Moderately and Sostenuto



# AS THE DAWN BREAKS

Tuba TC in B $\flat$

Naoya Wada

Moderately and Sostenuto

