

*Arranged by Douglas E. Wagner*

5

**Moderate tango** ♩ = 120

**50 Confidently ♩ = 120**

This Arrangement © 2024 SONY/ATV TUNES (ASCAP) on behalf of SONY/ATV MUSIC PUBLISHING (UK) LIMITED (PRS),  
WARNER-OLIVE MUSIC, LLC (ASCAP), TARADAM MUSIC, INC. (BMI) and DOWNTOWN DMP SONGS (BMI)  
All Rights (Excluding Print) for WARNER-OLIVE MUSIC, LLC (ASCAP) Administered by UNIVERSAL MUSIC CORP. (ASCAP)  
Exclusive Worldwide Print Rights for WARNER-OLIVE MUSIC, LLC (ASCAP) Administered by ALFRED MUSIC  
All Rights Reserved including Public Performance      Used by Permission

**Interact in  
MakeMusic  
Cloud™**



E♭ TUBA T.C. - 2

60



69



79

Brightly ♩ = 120 (♩ =  $\overline{\text{♩}}^3 \overline{\text{♩}}$ )

"You've Never Had Chocolate Like This"

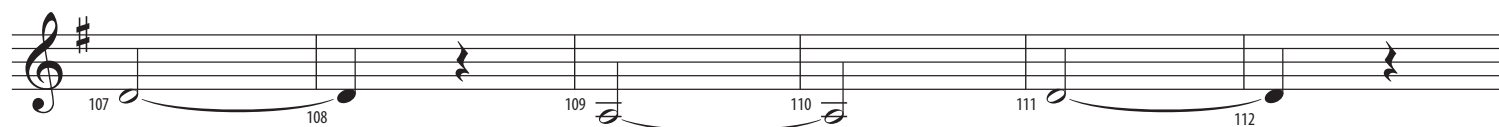
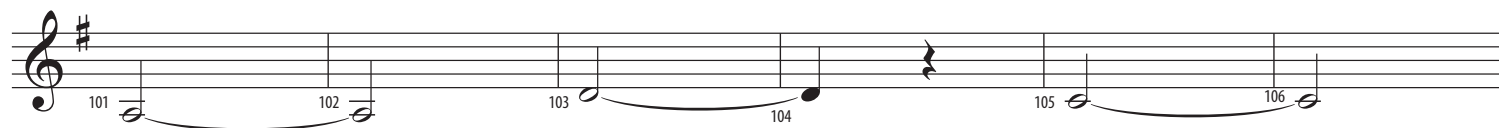
Music by Neil Hannon; Lyrics by Neil Hannon, Simon Farnaby and Paul King



89



97



113

