

ATLANTIS: THE LOST CONTINENT

B♭ Tuba B.C.

Rob Romeyn
(ASCAP)

Calmly legato, expressive

rall. [8] *A tempo*

012-4047-00

4

p *ff*

[20] *p* *rall.*

[28] *A tempo* *rit.* *p* *mp* *ff*

[34] *Aggressively* 4

2 [46] 8

[54] *ff*

[61] *p* *mf* *p*

mf *mp* *mf*

[77] *mp* *mf* *ff*

© 2011 Birch Island Music Press (ASCAP), P.O. Box 680, Oskaloosa, IA 52577, USA

International Copyright Secured. All Rights reserved. Printed in U.S.A.

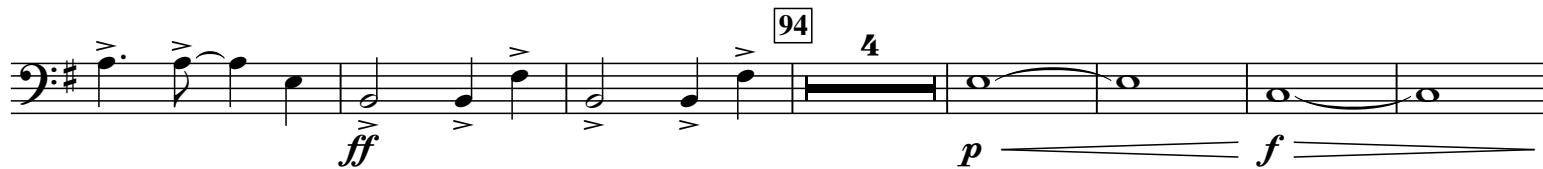
WARNING! This composition is protected by copyright law. To copy or reproduce it by any means is an infringement of the copyright law.

B♭ Tuba B.C.

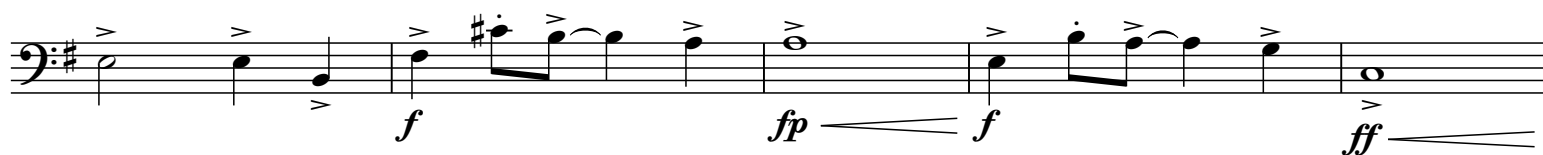
86



94



110



122 Dramatic!



132 legato, sustained



144 Aggressively

